

LBSU

Leeds Beckett
Students' Union



LBSU Activation Pack 2025/26

LBSU Activation Pack 2025/26

Helpdesk: 0113 812 8400

lbsu-mediasales@leedsbeckett.ac.uk

 leedsbeckettsu.co.uk

  [@leedsbeckettsu](https://www.instagram.com/leedsbeckettsu) / [@lbsuevents](https://www.facebook.com/lbsuevents)

Contents

Who We Are	03
Key Dates	04
Vetoos	05
Portland Pop-Up	06
The Hive	07
The Concourse	08
Outside Activations	09
Events Hall	10
Other Info	11



Who We Are

LBSU | Leeds Beckett
Students' Union

Located on Portland Way, Leeds, LS1 3HE

Contact

We have 28,000 students enrolled at any one time - 7,000 of whom are “Freshers”, and new to the city of Leeds. We also have an ever-growing number of international students enrolling with us. Students in Leeds spend £14 million in Freshers Week alone. The Students' Union represents all students at Leeds Beckett University and is an integral part of the fabric of university life.

As LBSU is a not-for-profit charity, the income we make from your business will fund things like our support services, and the work that we do enhancing the student experience here at Leeds Beckett.

Media Sales Inbox

lbsu-mediasales@leedsbeckett.ac.uk

Olivia Sharp

Head of Business Development
o.sharp@leedsbeckett.ac.uk

Interested? Visit leedsbeckettsu.co.uk/media-sales to book.



Key Dates

Campus term dates

Academic Year 2025/26

Term 1	15 September 2025 – 12 December 2025
Term 2	19 January 2026 – 27 March 2026
Term 3	13 April 2026 – 1 May 2026

Academic Year 2026/27

Term 1	21 September 2026 – 18 December 2026
Term 2	25 January 2027 – 2 April 2027
Term 3	19 April 2027 – 7 May 2027

Student Loan Drops 25/26

Payment 1	15th September 2025
Payment 2	5th January 2026
Payment 3	13th April 2026

Please note that these dates may vary by course and are provided as an estimated baseline only.

Want more info? View our Academic Calendar [Here!](#)

Vetoos

Exclusive Partnerships

(no advertising with any business that conflicts with their business)

- Domino's Pizza
- Veezu (Taxis)
- Voodoo Events (Night life Promoters)
- Rock Retro Vintage Clothing

Additional Vetoos

- Adult entertainment – including (but not limited to) strip clubs & OnlyFans accounts
- Tobacco, vaping and similar products
- Gambling
- Payday loans
- University competitors in courses/teaching
- Plastic bag distribution
- Gyms (at Headingley Campus only)
- Multi-level marketing businesses
- Cryptocurrency

Accommodation Providers

- Accommodation providers must be full members of the Unipol code or ANUK (National Code)
- Have no outstanding casework or concerns with the LBSU Advice Service.

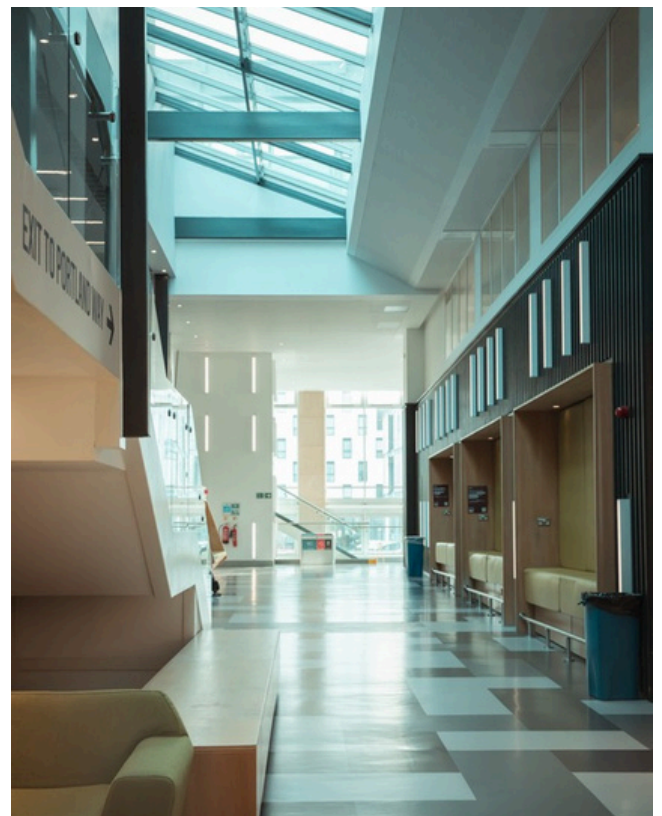
Please be aware that our vetoos are generalised, and in order to prevent issues during your activation, we require full information about all promotions and advertising in advance.

PORTLAND POP-UP



Our Portland Pop-Up space is ideal for stalls measuring up to 3m x 3m. Positioned along the main route to the lecture theatres and the Sheila Silver Library, this location benefits from high footfall throughout the day.

- Parking may be available upon request
- 13-amp power available upon request
- Space Specs - 4.8w, 4.37d, 2.86h
- PLI and RAMS required for each booking
- For full load-in map and information for this space, please click [HERE](#)



THE HIVE

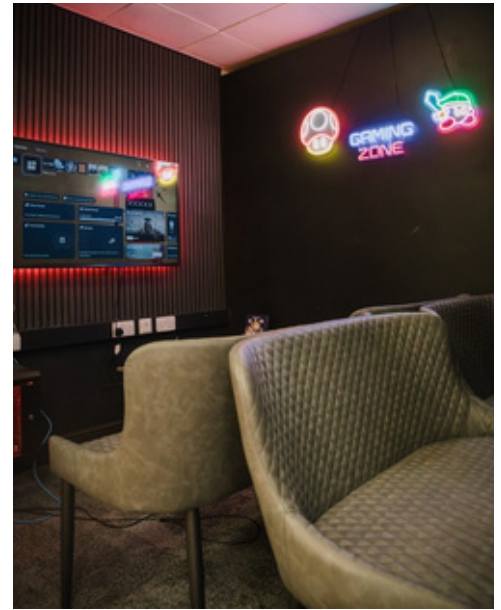


Located along Portland Way, The Hive is a high-footfall space serving food and drink throughout the day, making it an ideal location for brand activations and Pop-ups.

Parking may be available upon request; please enquire at the time of booking. If we are unable to provide complimentary on-site parking, alternative nearby parking options are available. Where parking is provided and approved, please ensure that no vehicles or activation activity obstruct fire exit routes or the public footpath.

- 13-amp power available upon request
- For full load-in map and information for this space, please click [HERE](#)
- PLI and RAMS required for each booking

THE CONCOURSE



Located between the entrance to The Hive and the Events Hall, The Concourse is a well-used internal thoroughfare with consistent daily footfall. The space benefits from clear sightlines and an open layout, making it suitable for a range of activations and pop-ups. A partnership with Pixel Bar places a gaming room directly adjacent to the space, contributing to a steady flow of students throughout the day.

Parking may be available upon request; please enquire at the time of booking. If complimentary on-site parking cannot be provided, alternative nearby parking options are available. Where parking is provided and approved, please ensure that no vehicles or activation activity obstructs fire exit routes or the public footpath.

- 13-amp power is available upon request
- PLI and RAMS required for each booking
- For full load-in map and information for this space, please click [HERE](#)

OUTSIDE ACTIVATIONS



Located on Woodhouse Lane, between the city centre and both Leeds universities, our outdoor activation area benefits from exceptional footfall.

Space Specs:

This space is split into two zones, separated by a fire door which must not be obstructed.

- Coach Box Area - 15.3m x 5.6m
- Rob Burrow Mural - 7.63m x 4.4m
- Parking may be available upon request; please enquire at the time of booking.
 - If complimentary on-site parking cannot be provided, alternative nearby parking options are available.
 - Where parking is approved, please ensure that no vehicles or activation activity obstruct fire exit routes or the public footpath.

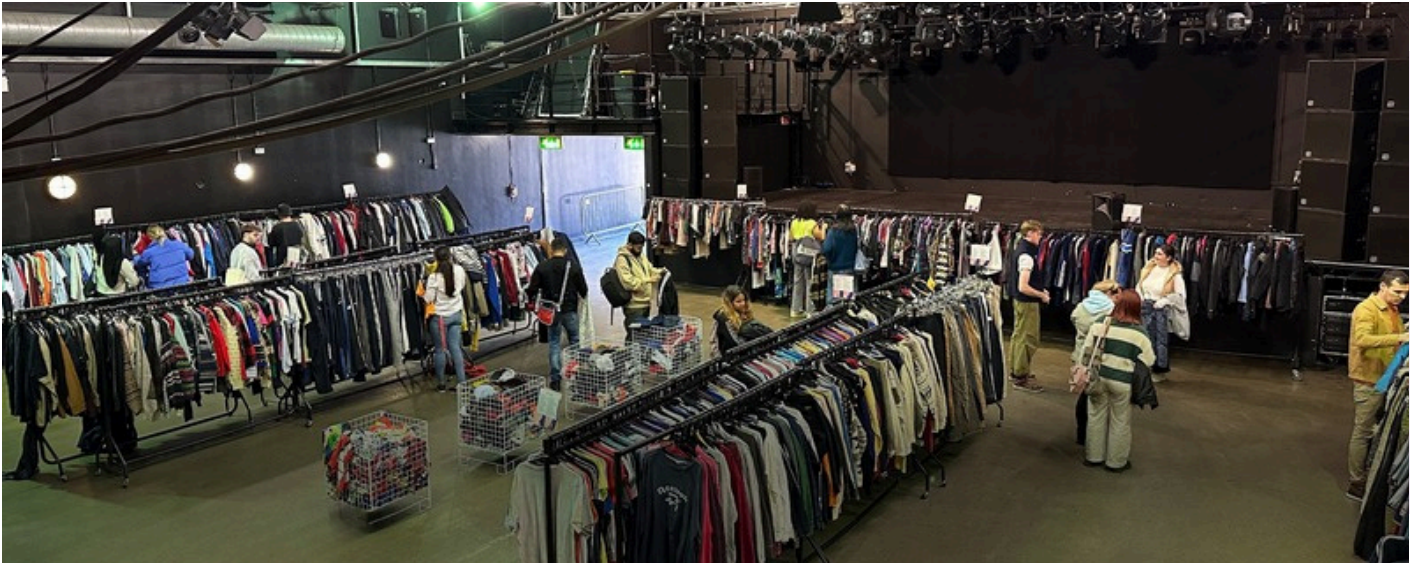
Landlines / Shore Power:

- Two 16A single-phase Ceeform connections are available via the loading bay.
- Generators are permitted only where necessary to support activations and must be declared at the point of enquiry or booking.
 - Comprehensive RAMS documentation must be submitted in advance.
- 13-amp power is available upon request

For the full load-in map and detailed information for this space, please click [HERE](#).



EVENTS HALL



With a capacity of 1,020, the Events Hall is ideal for larger pop-up stalls and high-impact activations, offering a flexible layout and ample space for engagement.

Please note that we have an exclusivity agreement with a vintage fair provider. As a result, all clothing-related activations must be approved in advance and may be subject to restrictions.

Parking may be available upon request; please enquire at the time of booking. If we are unable to provide complimentary on-site parking, alternative nearby parking options are available. Where parking is provided and approved, please ensure that no vehicles or activation activity obstruct fire exit routes or the public footpath.

13-amp power available upon request

PLI and RAMS required for each booking

For full load-in map and information for this space, please click [HERE](#)



Other Info

Internet

- Public guest Wi-Fi is available.
- If Wi-Fi is critical to your activation, we recommend bringing a dedicated router.

Security/Stewards

- Security can be provided upon request.
- If you choose to appoint your own security personnel, we will require a copy of the provider's public liability insurance. All security staff must hold valid SIA accreditation, and a copy of the provider's risk assessment for staff working at the event must be submitted in advance.

Generators

- Generators are reluctantly permitted to support activations
- This must be declared at the point of enquiry/booking
- Comprehensive RAMS documentation is required in advance

Parking

- Parking may be available upon request; please enquire at the time of booking.
- If we are unable to provide complimentary on-site parking, alternative nearby parking options are available. Where parking is provided and approved, please ensure that no vehicles or activation activity obstruct fire exit routes or the public footpath.
- Additional nearby paid parking includes the [Rosebowl car park](#) or [Woodhouse Lane car park](#).