

LBSU

2022-23 | Leeds Beckett Students' Union



Impact Report





LBSU | Leeds Beckett
Students' Union

**Welcome
to Leeds
Beckett**

**Students'
Union**



Contents



Impact Report 22/23 _____	04
Big Student Survey _____	16
BSS: Cost of Living & Finances _____	17
BSS: Success & Development _____	18
BSS: Sense of Belonging _____	19
BSS: Your Support _____	21

Making your voice heard

LBSU is run by and for our students, and the annual Leadership Election is your chance to have your say in who you want to represent you. This year our students really made their voices heard! We saw a whopping increase in voter turnout which has almost tripled, with a record number of international students standing for leadership roles.

Alongside growing voter turnout, we've also seen an increase in engagement with our postgraduate research students, had an amazing turnout for our Big Student Survey, and spoke to over 2,000 Beckett students this year - wow! Each and every interaction with you helps us to better represent LBU students both to the University and beyond!



LBSU supports students through the Cost-of-Living Crisis

This year the Cost-of-Living Crisis has hit Beckett students hard. From high utility bills to climbing grocery prices, we know it's been tough. That's why the Officer Team has been working incredibly hard to secure funding and resources from the University to support you during this difficult time.

Thanks to lobbying from your Officer Team, the University doubled its funding for student hardship, reduced the price of meals on campus and improved free transportation between City and Headingley campuses! Your Student Officers also pushed for more flexible timetabling to support students in part-time work or with care responsibilities. Our work with the University, including the Hardship Fund, which is open to all students, was even nominated for a prestigious WhatUni award!

Alongside her lobbying work, your Interim President and Welfare Officer Ashleigh also made sure students knew about important services like the free staff and student shuttle bus that runs between Headingley and City campuses.





Celebrating Leeds Pride 2022

Did you see us at Pride? We joined together with students, University staff and Students' Union staff to celebrate LGBT+ pride in the heart of Leeds City Centre!

While Leeds Pride is certainly one of our yearly highlights, we work to make sure all our student communities are represented throughout the entire year. Your elected Community Leaders have done an amazing job this year of representing your student voice and organising exciting campaigning activities!

Student Leadership

Leeds Beckett Students' Union is run by and for you!

Your Officer Team is elected by Beckett students to represent your voice both within the University and beyond. From events to campaigning and more, they've made a big impact on campus over the last year!



Building a sense of Belonging at Beckett

Throughout the year, your Academic Experience Officer Meg has encouraged students to celebrate what makes them unique! As part of her work on belonging at university, Meg created an interactive Belonging at Beckett exhibition complete with a launch party! The exhibit encouraged students to share what made them feel part of the community here at LBU.

Whether she's been empowering disabled students to stand for leadership positions or sharing her own challenges and successes, Meg's priority has always been to make sure all students knew they belonged.



Accessibility at Graduation

This year, our Academic Experience Officer Meg focused on making graduation more accessible and welcoming to all students! Working with the University, Meg helped to craft new offerings for disabled students after demonstrating how difficult it is for all students to access graduation ceremonies without adjustments.

Replacing the lift for a ramp to the stage and providing sunflower lanyards for students with hidden disabilities will make a massive difference, and we're thrilled every student graduating from Leeds Beckett will be able to celebrate their accomplishments with their peers!



Paint and Reflect for Stephen Lawrence Day

To mark the 30th anniversary of the murder of Stephen Lawrence, your Interim President and Welfare Officer Ashleigh held a painting workshop where students could come and engage in important discussions on race and equality while creating a lovely picture to take home. The workshop was part of Ashleigh's work on a wider Leeds Beckett Black Liberation Campaign.

Throughout the year, EDI work has been a top priority for Ashleigh, whether she's been embedding best practice into LBSU, speaking to students about their experiences or bringing important conversations to the highest levels at LBU.



Student and Academic Representation

LBSU supports Course Reps, Student Academic Representation Assistants (SARAs) and Student Community Leaders to lead impactful work both on campus and beyond. Around 1,000 Course Reps volunteered their time this year and SARAs have led some big projects that will have lasting influence here at Beckett!

Improving student placement support was a big theme this year. Sam Akroyd, SARA for the Carnegie School of Education, raised student concerns around unpaid placements and even got this point on the agenda in Parliament – talk about big impact! Your SARA for Leeds Business School, Libby Gosling, worked with the Placements Team to ensure better support was in place both for students currently on placements and for those returning to their studies. Lauren Senior, a PGR SARA, ran events throughout the year to create a student community at Level 8 and to further support the Graduate School in engaging students by opening channels for communication.



Diwali celebrations bring record turnout at Headingley Campus

One of our event highlights of the year was celebrating Diwali with you at Headingley and City Campus! Over 250 students attended the event at Headingley Campus – one of our highest turnouts ever for an event at The Hive on Headingley Campus. With free food on offer, including delicious samosas, students were invited to come and join in the festivities, enjoy the atmosphere and meet other students.

The celebrations didn't stop with Diwali! Your Activities and Events Officer Harsh worked hard to deliver a series of engaging events across both campuses – from Diwali to the International Welcome Party to collaborations for Leeds Holi Festival and the Festive Fair!



Festive Fair and Beckett's small businesses

This holiday season we invited aspiring student entrepreneurs to our first Festive Fair! Students with budding businesses could come and participate as vendors with their very own stalls. We had bakery, jewelry, food stalls and many more!

It was a fun opportunity for students to pick up some last-minute holiday gifts, and the event provided a wonderful platform and experience for Beckett entrepreneurs.



Let's go Beckett: LBSU goes to Varsity

LBSU attended the Varsity Rugby Finale at Headingley Stadium this year! From joining in stadium-shaking cheers to sharing in the joy of our student athletes as they lifted their trophies, Varsity was definitely one of our highlights.

However, it wasn't just the excitement of the finale we were able to get involved in! Your Students' Union helped throughout the Varsity planning process, and your Officer Team was able to take the student voice into even more spaces. We're already looking forward to next year!



Beckett students give back

Our students have a strong track record of giving back to the community, and this year was no different. With the help and support of your Students' Union, Beckett students volunteered over 3,888 hours of their time! Thanks to our new hour-logging system, we know that our students' volunteering efforts have had a local economic impact of almost £40,000! This year over 900 students created volunteer profiles on our website, helping connect them with local charities with causes they're passionate about. Whether you're volunteering from home or getting out into the community in person, we're so proud of all your hard work this year!

Lots of students need volunteering hours as part of their course, and we identified that there aren't always enough opportunities. We're working on improving our offer to help support students to find volunteering opportunities that work for them, their course and local organisations! We're excited to keep working on how we can better support students with their course-based volunteering next year!



Student-led Sustainability

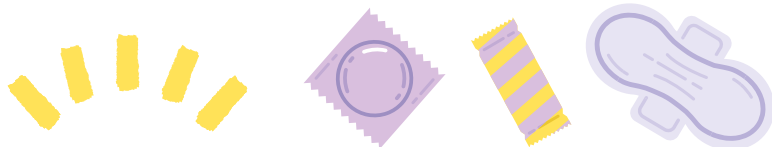
With increased opening times, both student-led projects have become sustainable staples for students at City Campus, and now profits from these social enterprises even fund their own paid student roles!

We all know how great EcoSoup and Shop Zero are, but they've also been nominated for awards for their wonderful work! Eco Soup was recognised a Bronze Award and Shop Zero was awarded a Silver Award from Beckettsphere for their impact and reach at Leeds Beckett University. Well done!

An exciting year of events!

LBSU has held 200 student-led events and 22 gigs this year on top of festivals and other events, like vintage clothing sales! From Wet Leg to Caroline Polachek to the Bad Omens and so much more, your Students' Union has hosted some top artists this year.

Not only is LBSU a great place to catch some of your favourite artists, but all of the proceeds also go right back into funding initiatives and support for Beckett students. It's a win-win!



Welfare products and sexual health on campus

Thanks to a student's Have Your Say proposal, this year we distributed 32,348 welfare products to Leeds Beckett students! That includes tens of thousands of period and sexual health products for students in need. We're even looking at expanding the provision of products with Student Services next year! Mesmac, one of our trusted volunteering partners, has been coming onto campus monthly to promote awareness of sexual health among students. They've engaged with over 500 students and conducted 33 HIV tests, plus they've provided students with many chlamydia and gonorrhoea tests to take home!



Empowering students through advice

We know that university life can have its ups and downs, but LBSU is here to support you! This year our Advice Service offered free, confidential and independent advice to 2310 Beckett students on 3009 cases covering everything from academic to housing to financial matters, and we got back a whopping £111,790.36 for students! Students who used the Advice Service said “The thorough, quick and productive support that you provided made such a tremendous difference for me. Thank you!” and “I came to the Students’ Union really upset. However, my mind was put to rest with the fantastic advisors who helped every step of the way. It has most definitely had a positive impact.”

Academic integrity can feel confusing at times, and every year the Advice Service sees hundreds of students who have been accused of poor academic practice. This year the Advice Service worked with Academic Librarians to deliver sessions on good academic integrity to over 600 students in the Business School!



Another great year for societies

From the buzz of Freshers Fair to the excitement of socials throughout the year, your Students' Union has supported more than 70 student-led groups and societies this year! Societies are at the heart of our student community here at LBSU. They're a brilliant way to meet new people and try new things, and this year we saw loads of you getting involved with 3,900 society memberships purchased!

Whether we're offering support and guidance for student publications or helping to facilitate events for performing arts groups, we're thrilled to help you make your societies an exciting part of your university experience. And with societies organising standout activities and events, it's safe to say that they really do make the student experience here at Beckett one of a kind!



BAR & KITCHEN



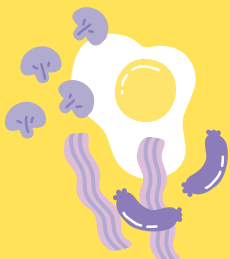
Fueling your study sessions at The Hive!

This year, The Hive served up thousands of budget-friendly bites to students! From paninis of the day to piping hot jacket potatoes and so much more, we helped fuel your study sessions over and over again.



COFFEE

You got your caffeine boost at The Hive and grabbed a Starbucks 14,030 times



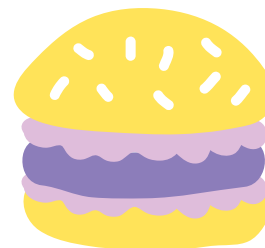
BREAKFAST ITEMS

We helped you start the day off right, serving 6,542 breakfast items!



DRINKS

The Hive pulled a whopping 54,258 pints. Thirsty students also stopped in for 26,541 soft drinks!



BURGERS

It's clear that Beckett students love burgers because The Hive grilled 2,154 of them for you this year!



LUNCH FAVES

Our panini of the day proved a popular choice with you ordering 7,058 paninis! A comforting favourite, you ordered a whopping 1,254 jacket potatoes this year. We also served up 624 salads to satisfy all your lunchtime cravings.





Big Student Survey

Leeds Beckett Students' Union is run by and for you!

Each year we run our Big Student Survey so that we can hear what your top concerns and priorities are. All the thousands of responses we've received for the survey will help us to make sure that your Students' Union represents you and serves your needs as best as it can.

From hearing your concerns around the Cost-of-Living Crisis to listening to your opinions on how we can build a sense of belonging on campus, you've told us what you'd like to see from us, and we've heard you loud and clear! We'll use your feedback to help us shape our initiatives, services and campaigns in the year ahead.

Cost of Living and Finances

This year, the Cost-of-Living Crisis and finances have been top concerns for students. Through the Big Student Survey, you've told us that the Cost-of-Living Crisis has had a negative impact on your experience here at LBU. Whether you've been concerned about transport, or the impact money worries have had on your student experience, we'll continue to support Beckett students!

These are some of the concerns students have raised around cost of living and finance:



Care Costs



Transport



Essentials
(Bills, rent, food etc...)

Cost of Living and Finances

These are some of the concerns students have raised around cost of living and finance:



Impacts on Academic experience



Impacts on Student experience



Limits of SFE Support / Loans



Reliance on parental support



Employment demands



Impacts on mental health



Placement Demands



Postgraduate & PHD strains

Success and Development

You've told us about some of the barriers to your success and development here at university and we listened. From concerns about lack of support for placements to worries about juggling many different time pressures, we'll take your feedback on board to help inform our programmes and support.

These are some of the barriers and concerns that have been raised around success and development:



Childcare support



Financial support



Networking & Job Opportunities



Housing access



Time Pressures



Accessibility worries



Opportunities to socialise



Social anxiety & lack of confidence

Sense of Belonging

You've told us it's important for you to have a sense of belonging at university, and your students' union is here to help foster that sense of community and belonging, from supporting societies and volunteering opportunities to making sure our physical spaces are nice and accessible, and more.

These are some of the requests & concerns that were raised regarding physical spaces:



More events & food options at The Hive



limitations on space in the library



More comms about events & activity



Employment creating barriers



More communal study & social space



Better accessibility on campus

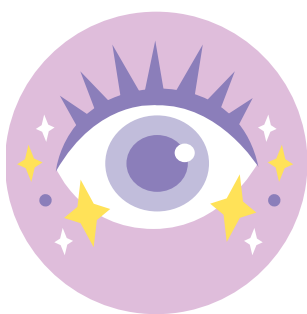


More presence on Headingley campus



Lack of awareness about the SU

These are some of the points students have raised around how we can build community and sense of belonging for the student body:



Improve SU visibility & awareness



Increase on-campus culture & events



Increase comms about events & opportunities



Increase mixers & student group meets



Clearer signposting about available space



More time-flexible social opportunities



Increased diversity in social spaces



Better sporting & society signposting

Your Support

LBSU is here to support you throughout your time studying at Leeds Beckett University! Through the Big Student Survey, you've told us that we provide an environment that supports good mental health and wellbeing and shared how we could better support you in the future.

These are points students said we could look at to improve health and wellbeing on campus:



Increased wellbeing support & signposting



Increased financial support & resources



Improvements in academic support



Improved access to external support



Improved access to resources & teaching



Better deadline & calendar planning



Improved peer support



Better support for postgrad students

Impact Report Conclusion

Leeds Beckett Students' Union is run by and for students like you!

From supporting societies, offering volunteering opportunities and leading campaigns to offering all LBU students free, confidential and independent advice, our aim is to make your student experience the best it can be!

Thank you for shaping our work over the past year! Whether you've made your voice heard by voting in the Leadership Elections, stood for a position, gave your time to volunteer, or got involved in academic representation, we couldn't have done this without you. While this report has highlighted a lot of the great work you've done, we haven't been able to mention all of the amazing things you've achieved this year. And a huge thank you goes to our wonderful student leaders - without you, LBSU wouldn't have a purpose.

If you've been inspired by some of our students' great work, make sure to check out our website to find out how you can get involved! We can't wait to see how you'll make an impact here at LBSU.



Thanks for reading!